



91a Ridgeway Lane, Bristol , BS14 9PH

£254,750

- Three Bedroom Duplex
- Substantial Main Bedroom
- Driveway Parking
- EPC - C
- Bathroom & En-Suite
- Private Rear Garden
- Newly Refurbished
- 991 Sq Ft.

**\*\*NO ONWARD CHAIN & FULLY REFURBISHED\*\***

Greenwoods are delighted to present this substantial three-bedroom duplex benefitting living space over 2 floors, situated on Ridgeway Lane in Whitchurch.

The accommodation briefly comprises a shared welcoming entrance hallway, before meeting the internal front door once inside, the first floor profits a generous brand-new open plan kitchen/living space, perfect for hosting friends and family, the space profits from windows at either end filling the space with natural light. Two bedrooms and contemporary family bathroom, each room benefits dimplex high retention heaters ensuring comfortable and cosy living all year round.

On the second floor we find an expansive main bedroom measuring over 17ft, with a newly installed en-suite shower room.

Additional highlights include a parking space to the front and private courtyard garden to the rear.

This property has been fully refurbished and is ready for it's new owners.

Ridgeway Lane proves to be a popular location for first time buyers and for those with growing families alike, conveniently placed within close proximity to shops and eateries on the nearby Gilda Parade.

Contact Greenwoods today to arrange your viewing!

Kitchen 12'7" x 11'6" (3.86 x 3.52)

Living Room 12'4" x 11'6" (3.78 x 3.52)

Bedroom One 55'9"13'1" x 45'11"32'9" (17'4 x 14'10)

En-suite 7'4" x 4'7" (2.24 x 1.4)

Bedroom Two 9'5" x 8'11" (2.88 x 2.74)

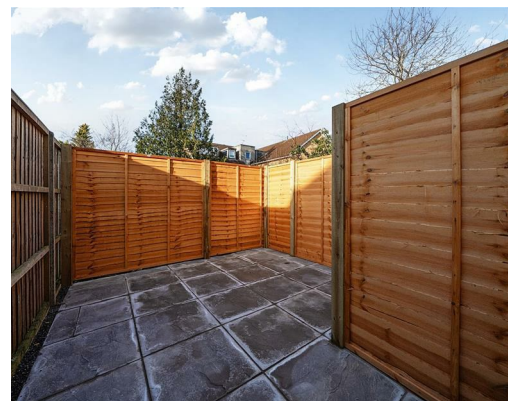
Bedroom Three 9'6" x 5'6" (2.92 x 1.68)

Bathroom 5'11" x 5'10" (1.82 x 1.79)

Private Courtyard Garden

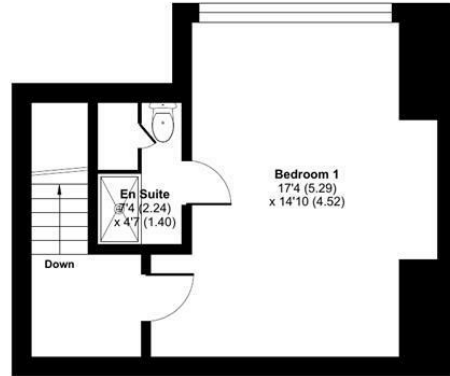
Driveway



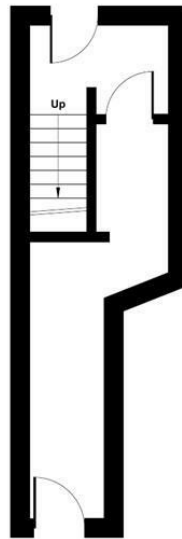


## Ridgeway Lane, Bristol, BS14

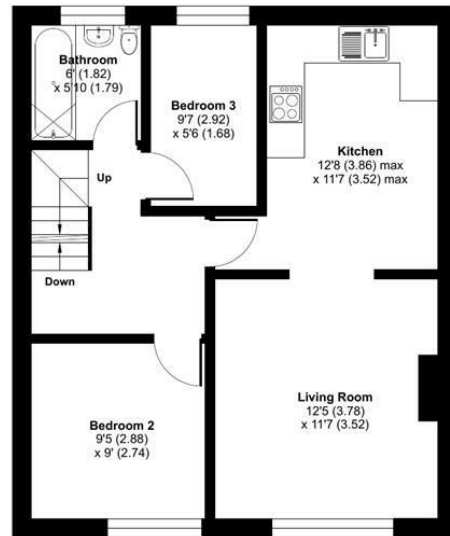
Approximate Area = 991 sq ft / 92 sq m  
For identification only - Not to scale



SECOND FLOOR

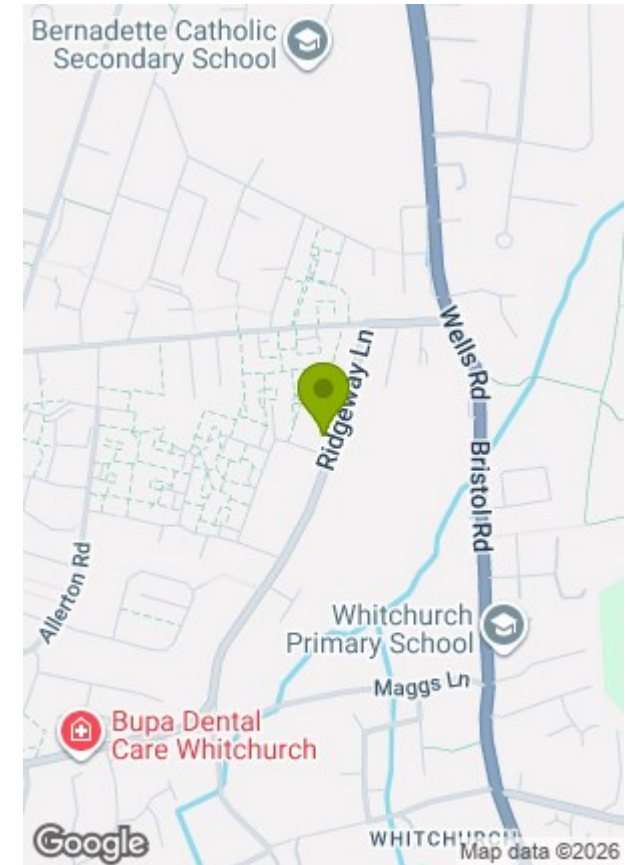


GROUND FLOOR

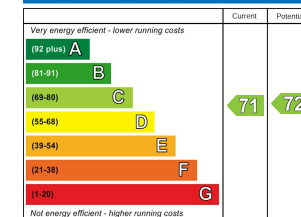


FIRST FLOOR

Floor plan produced in accordance with RICS Property Measurement 2nd Edition, Incorporating International Property Measurement Standards (IPMS2 Residential). © nichecom 2026. GREENWOODS SALES · LETTINGS · COMMERCIAL  
Produced for Greenwood's Property Centre. REF: 1395398

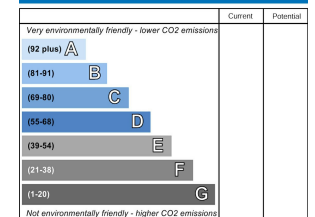


### Energy Efficiency Rating



England & Wales EU Directive 2002/91/EC

### Environmental Impact (CO<sub>2</sub>) Rating



England & Wales EU Directive 2002/91/EC

These particulars, whilst believed to be accurate are set out as a general outline only for guidance and do not constitute any part of an offer or contract. Intending purchasers should not rely on them as statements of representation of fact, but must satisfy themselves by inspection or otherwise as to their accuracy. No person in this firm's employment has the authority to make or give any representation or warranty in respect of the property.